

L3 115.31' N16°18'22"W

NOT A SURVEY
SEE ORIGINAL IN THE
OFFICE

UNPLATTED



THIS IS NOT A SURVEY. THIS MAP IS FOR INFORMATIONAL PURPOSES ONLY. PIONEER TITLE COMPANY MAKES NO REPRESENTATIONS AS TO THE ACCURACY OF THE MAP AND ASSUMES NO LIABILITY FOR IT.

E 1/16 S 89°55'12" W - 1326.58'
1/2" REBAR 1133.57'

T. 51 S 89°54'41" E - 1320.31'

T. 51

1023.88'

T. 41

EASTERN 1/2 RIGHT-OF-WAY OF U.S. HIGHWAY 95
UNPLATTED

ACCESS/UTILITIES EASEMENT

S00°00'03"E - 1324.48'

34.36'

183.00'

298.36'

248.90'

167.00'

381.16'

223.77'

480.92'

682.21'

49.78'

369.73'

901.84'

1051.88'

1051.00' W

480.92'

480.92'

480.92'

480.92'

480.92'

480.92'

480.92'

480.92'

480.92'

SEC COR
BRASS CAP
CP&F 200530131

1/2" REBAR
LS 4347

PARCEL 1
57,460 sq. ft.
1.32 acres

PARCEL 2
444,127 sq. ft.
10.20 acres

PARCEL 3
856,321 sq. ft.
15.07 acres

SPIRAL TABLE					
L	LENGTH	S	r	CHORD	CHORD DIST
1	250.00	2'30"	0.8	N00°08'31"W	206.21'
2	250.00	2'30"	0.8	N15°28'14"W	252.60'

SPIRAL DATA IS OF RECORD FOR THE CENTERLINE OF -OF-WAY EXCEPT CHORD DATA WHICH IS FOR THE OFFSET TO SPIRAL ON THE BOUNDARY LINE.

CURVE TABLE					
VE	LENGTH	RADIUS	DELTA	CHORD	BEARING
1	157.26'	2914.79'	3°05'28"	157.24'	N03°10'14"W
2	413.05'	2924.79'	8°05'32"	412.74'	N09°45'44"W
3	183.00'	2924.79'	3°11'35"	182.98'	N12°12'42"W
4	250.08'	2924.79'	4°53'38"	250.01'	N08°09'56"W

BASE OF BEARING
N 00°53'20" E - 2646.92'

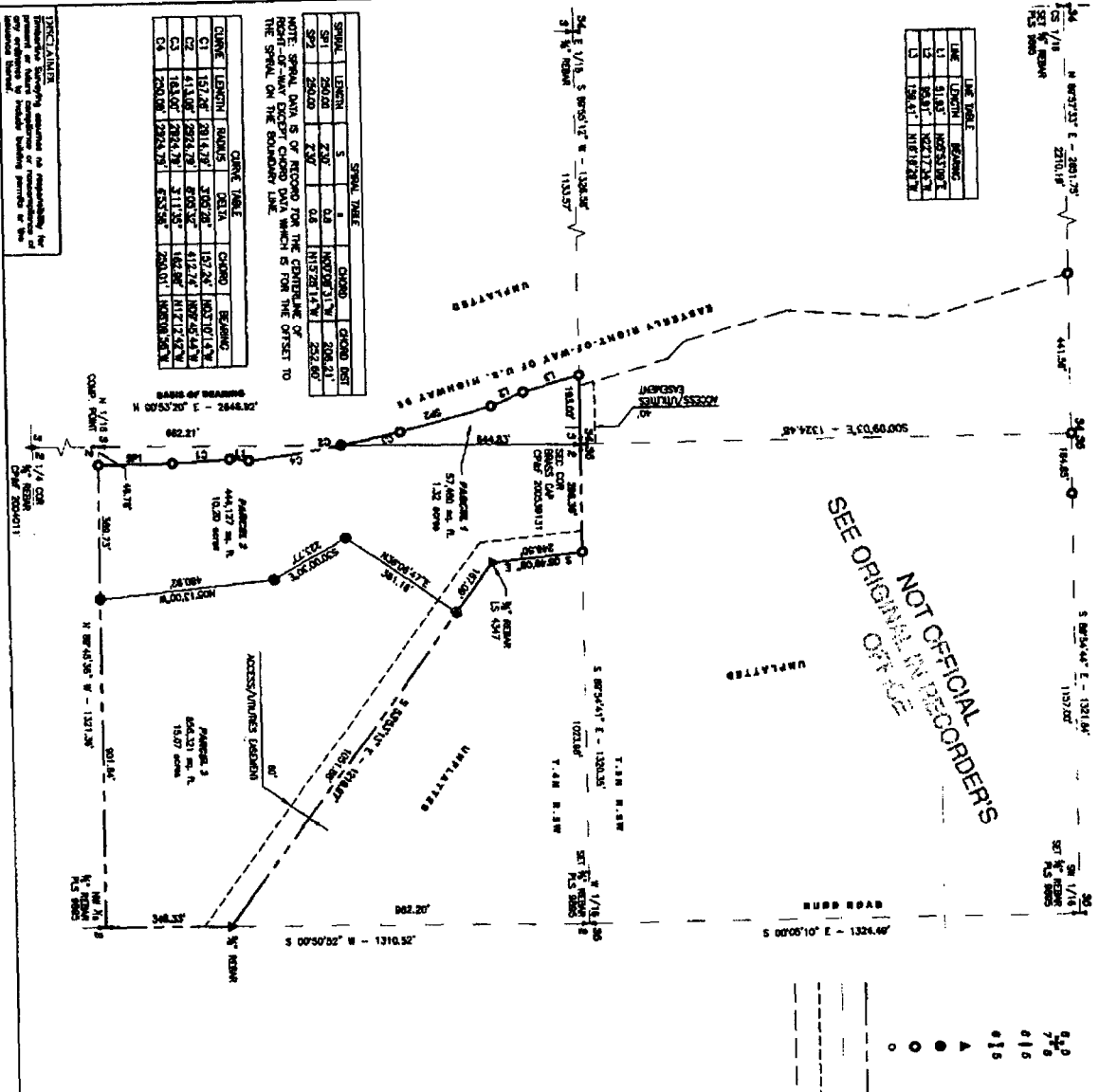
N 1/16 S
COMP. POINT

1/4 COR
1/2" REBAR
CP&F 2004011

DISCLAIMER
The Surveying assumes no responsibility for or future compliance or noncompliance of license to include building permits or the like thereof.

RECORD OF SURVEY FOR
DONNA WESTON
 A PORTION OF THE NORTHWEST 1/4 OF SECTION 2 AND A PORTION OF THE
 NORTHEAST 1/4 OF SECTION 3, TOWNSHIP 4 NORTH, RANGE 5 WEST, 8N,
 CANYON COUNTY, IDAHO
 -2007-

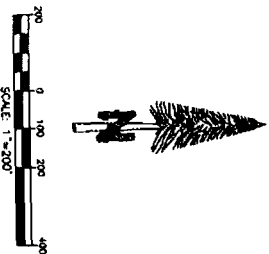
NOT OFFICIAL
 RECORDERS
 SEE ORIGINAL IN RECORDER'S
 OFFICE



SERIAL	LENGTH	BEARING	CHORD	CHORD DIST
S1	250.00	2.00°	0.4	140.000017°
S2	250.00	2.00°	0.4	115.28117°
S3	250.00	2.00°	0.4	115.28117°
S4	250.00	2.00°	0.4	115.28117°

CONTAINER
 This plat is subject to the provisions of the
 Idaho Statutes relating to the recording of
 surveys and the recording of the same.
 The surveyor warrants that the same is
 a true and correct copy of the original
 survey as shown to him by the owner
 thereof.

- LEGEND**
- SECTION CORNER MONUMENT AS NOTED
 - IN COR. MONUMENT AS NOTED
 - 1/8 COR. MONUMENT AS NOTED
 - FOUND MONUMENT AS NOTED
 - SET 1/8" REBAR W/ CAP PLS 9899
 - FOUND 1/8" REBAR W/ CAP PLS 9895
 - COMPUTED POINT
 - BOUNDARY LINE
 - SECTION LINE
 - FARMER LINE
 - RIGHT-OF-WAY LINE
 - ADJOINER LINE



CERTIFICATE:
 I, KENNETH H. COOK, A PROFESSIONAL LAND SURVEYOR IN THE STATE OF IDAHO, CERTIFY THAT:
 1. THIS PLAT REPRESENTS THE RESULTS OF A SURVEY CONDUCTED UNDER MY DIRECT SUPERVISION AT THE INSTANCE OF THE DONNA WESTON.
 2. THE LANDS SURVEYED ARE WITHIN SECTION 2 & 3, TOWNSHIP 4 NORTH, RANGE 5 WEST, RANGE 5 WEST, AND THE SURVEY WAS COMPLETED ON JANUARY 23, 2007.
 3. THE MONUMENTS DEPICTED ON THE PLAT ARE OF THE CHARACTER SHOWN, AND OCCUPY THE POSITIONS INDICATED AND ARE OF SUFFICIENT NUMBER AND DURABILITY, AND IS IN CONFORMITY WITH THE CORNER PERPETUATION AND PLING ACT, STATE OF IDAHO CODE 55-1801 THROUGH 55-1912.



KENNETH H. COOK

FILE 9895

BASIS OF BEARING:
 The West line Northwest 1/4 of Section 2, Township 4 North, Range 5 West, Boise Meridian, taken as North 0°23'20" East and distance between monuments found to be 2546.92 feet.

RECORD DATA
 ROS No. 200605864
 ROS No. 200507260
 ROS No. 200507260
 ROS No. 200524212
 ROS No. 200101047
 ROS No. 8708013
 ROS No. 200171915
 ROS No. 8802820
 L.T.D. HIGHWAY 93 DESIGN PLANS

TIMBERLINE SURVEYING
 208-463-9887
 208-463-9887