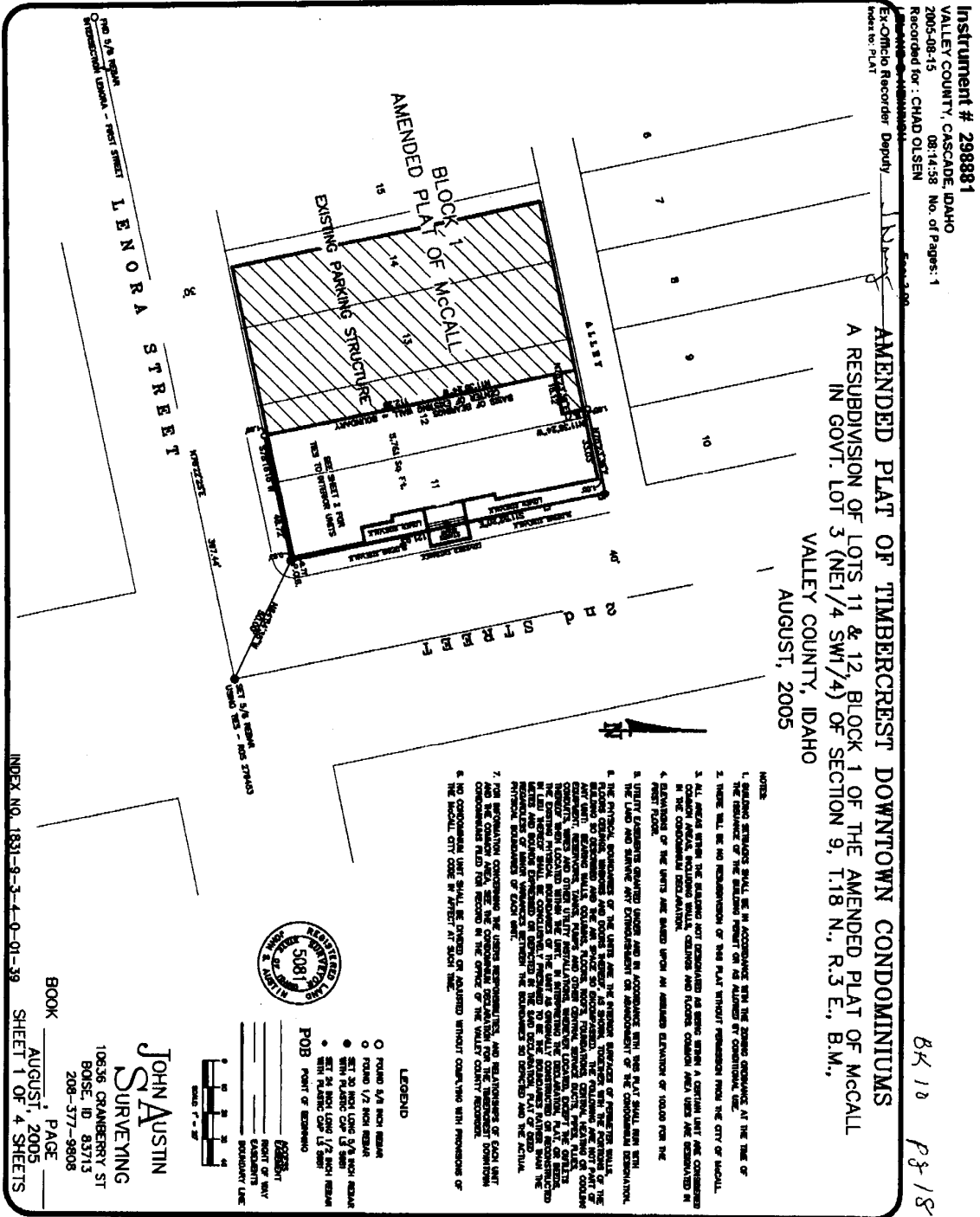
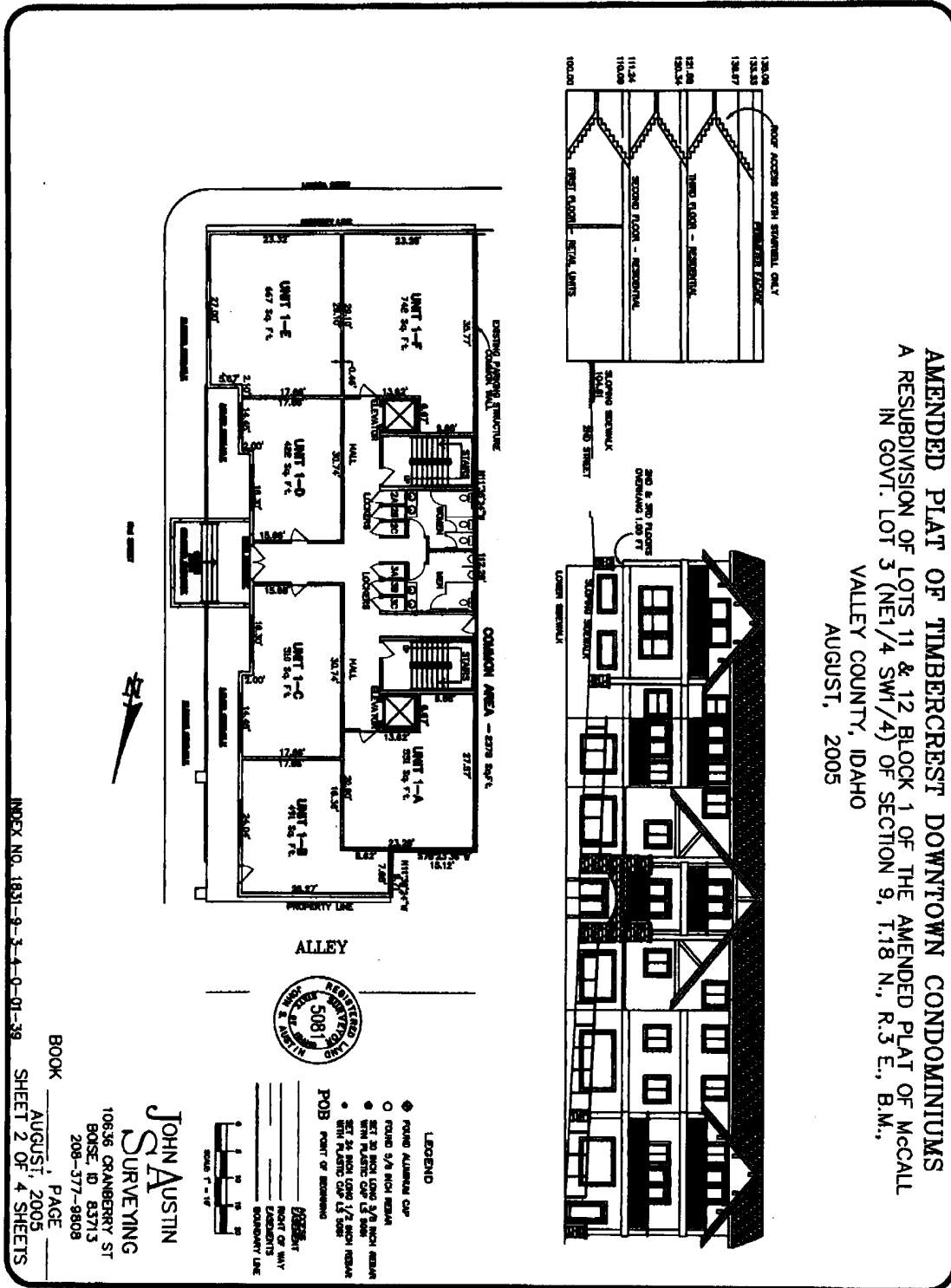


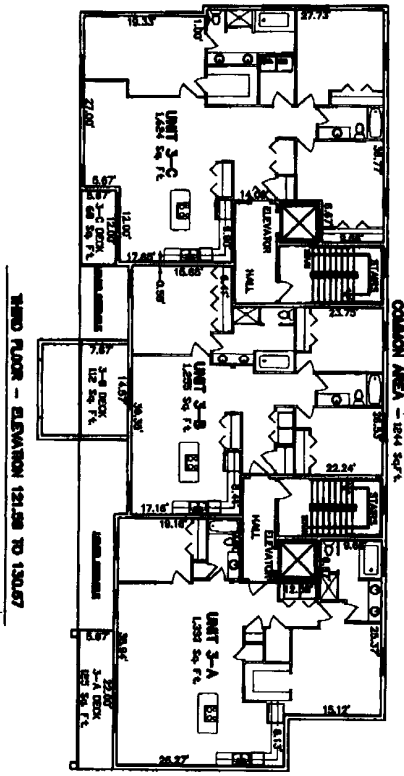
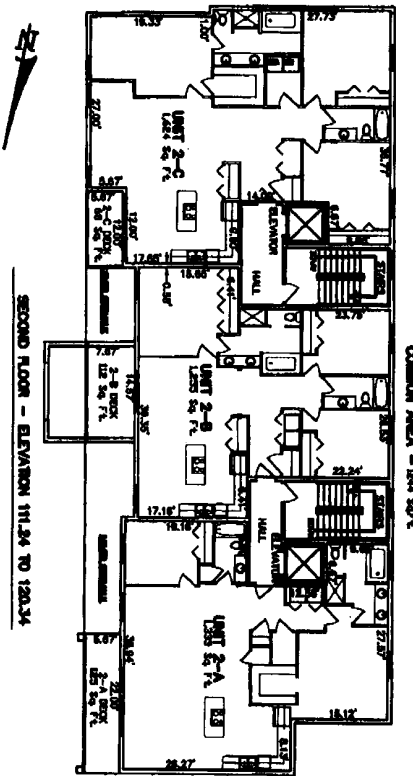
**TIMBERCREST
PLAT**





All information regarding this flyer is from sources deemed reliable, but is not guaranteed by the broker. This offer is subject to price change and withdrawal.

AMENDED PLAT OF TIMBERCREST DOWNTOWN CONDOMINIUMS
 A RESUBDIVISION OF LOTS 11 & 12 BLOCK 1 OF THE AMENDED PLAT OF McCALL
 IN GOVT. LOT 3 (NE1/4 SW1/4) OF SECTION 9, T.18 N., R.3 E., B.M.,
 VALLEY COUNTY, IDAHO
 AUGUST, 2005



LEGEND

- ◆ FOUND ALUMINUM CAP
- FOUND 5/8 INCH REBAR
- SET 20 INCH LONG 5/8 INCH REBAR WITH PLASTIC CAP 1/2 INCH
- SET 24 INCH LONG 7/8 INCH REBAR WITH PLASTIC CAP 1/2 INCH
- POB POINT OF BEGINNING

PROPERTY
 RIGHT OF WAY
 EASEMENTS
 CADDISHERS
 BOUNDARY LINE

SCALE 1" = 10'

JOHN AUSTIN
 SURVEYING
 10636 ORANBERRY ST
 BOISE, ID 83713
 208-377-9808

BOOK _____ PAGE _____
 AUGUST, 2005
 SHEET 3 OF 4 SHEETS

INDEX NO. 1831-9-3-4-0-01-39

All information regarding this flyer is from sources deemed reliable, but is not guaranteed by the broker. This offer is subject to price change and withdrawal.